

1. Alleyne, Antony - Kuperman, Iser

Alleyne, Antony [1]

1.11-16 21-17 2.9-14 25-21 3.8-11 22-18 4.16-20 18x9 5.5x14 29-25 6.11-15 25-22 7.7-11 23-18
8.14x23 27x18 9.20x27 31x24 10.12-16 24-20 11.4-8 32-27 12.8-12 26-23 13.1-5 17-13 14.16-19
23x14 15.6-9

[15.3-7 18x11 16.7x16 20x11 17.12-16 11x20 18.6-9 13x6 19.2x25 21-17 20.25-29 17-14
21.29-11 14-10 22.5-9 27-24 23.11-22 10-7 24.22-18 7-2 25.9-13 20-16 26.13-17 2-13 27.17-21
16-12 28.18-4 24-19 29.4-18 13-26 30.18-4 26-17 31.21x14 12-8 32.4x24 28x19 x]

15...13x6 16.2x9 18x11 17.9x25 27-24 18.25-29 11-7 19.3x10 20-16 20.12x19 24x6 21.29-4 6-2 0-2

2. Kuperman, Iser - Anthony Alleyne

Alleyne, Antony [2]

1.11-16 22-17 2.10-15 24-20 3.16-19 23x16 4.12x19 17-13 5.9-14 25-22 6.14-17 21x14 7.6-9 13x6
8.2x25 29x22 9.5-9 22-18 10.15x22 26x17 11.1-6 27-23 12.19x26 31x22 13.7-10 30-25? 14.9-14
25-21 15.14-18 22x15 16.10x19 32-27 17.6-9 17-13 18.9-14 21-17 19.14x21 13-9 20.3-7 9-5
21.7-11 5-1 22.19-23 27x18 23.11-16 20x11 24.8x22 28-24 25.21-25 24-19 26.25-30 19-15
27.30-21 2-0

3. Barnett, Al - Kuperman, Iser

Barnett, Al [3]

1.11-15 23-19 2.8-11 26-23 3.11-16 24-20 4.15x24 20x11 5.7x16 28x19 6.4-8 22-18 7.8-11 25-22
8.16-20 29-25 9.2-7 31-26 10.10-15 19x10 11.6x15 18-14 12.9x18 23x14 13.15-19 32-28 14.11-16
27-23 15.1-6 22-17 16.7-11 17-13 17.3-7 25-22 18.7-10 14x7 19.11x2 22-17 20.20-24 23-18! 21.2-7
26-23 22.19x26 28x19 23.16x14 17x1 24.26-31 30-25 25.31-27 21-17 26.27-20 17-14 27.20-11
25-21 28.11-4 1-24 29.4-29 13-9 0-2

4. Kuperman, Iser - Barnett, Al

Barnett, Al [4]

1.11-16 22-18 2.10-14 24-20 3.6-10 20x11 4.8x22 25x18 5.12-16 26-22 6.4-8 22-17 7.9-13 18x9
8.13x6 29-25 9.8-11 17-14 10.10x17 21x14 11.6-9 23-18 12.16-19 30-26 13.1-6 25-21 14.3-8 27-23
15.11-16 32-27 16.8-11 27-24 17.11-15 18x20 18.9x27 24x15 19.27-32 20-16 20.6-10 15x6 21.2x9
28-24 22.32-18 21-17 23.18-25 16-12 24.25-29 24-19 25.29-25 19-16 26.25-29 17-13 27.9-14 13-9
2-0

5. Bibbs, Otho - Kuperman, Iser

Bibbs, Otho [5]

1.9-14 24-19 2.11-16 22-18 3.14-17 21x14 4.10x17 25-21 5.6-10 21x14 6.10x17 29-25 7.17-21
18-14 8.8-11 23-18 9.16x23 26x19 10.11-16 27-23 11.2-6 28-24 12.16-20 25-22 13.20x27 31x24
14.6-9 14-10 15.7x14 22-17 16.4-8 17x10 17.9-14 10x17 18.21x14 18x9 19.5x14 19-15 20.1-5

[20.14-17 15-10 21.17-22 23-19 22.8-11 24-20 23.11-15 20-16 24.15x24 16-11 25.24-27 32x23
26.12-16 11x20 27.22-26 30-25 28.26x19 25-22 29.19-23 20-16 30.23-27 16-11 31.27-31 11-7
32.31x13 7-2 33.3-8 2-20 34.13-17 20-7 35.17-13 7-2=]

20...23-19 21.14-17 15-10 22.5-9 19-15 23.17-21 24-20 24.3-7 10x3 25.9-14 3x17 26.21x14 32-27
27.8-11 15x8 28.12x3 27-23 29.3-7 20-16 30.7-10 16-11 31.14-17 11-8 32.10-15 8-4 0-2

6. Bibbs, Otho - Kuperman, Iser

Bibbs, Otho [6]

**1.9-14 22-17 2.11-16 25-22 3.8-11 23-18 4.14x23 27x18 5.16-20 17-14 6.20x27 31x24 7.10x17
21x14 8.12-16 29-25 9.6-10 25-21 10.10x17 21x14 11.7-10 14x7 12.3x10 24-20 13.5-9 28-24
14.4-8 32-28 15.8-12 30-25 16.10-15 26-23 17.2-7 25-21 18.7-10**

[18.1-5 24-19 19.15x24 28x19 20.7-10 22-17 21.9-14 18x9 22.5x14 17-13 23.14-18 23x7
24.16x23 7x16 25.12x19 13-9=]

**18...21-17 19.1-5 17-13 20.9-14 18x9 21.5x14 24-19 22.15x24 28x19 23.14-17 22-18 24.11-15
18x11 25.16x7 13x22 0-2**

7. Bibbs, Otho - Kuperman, Iser

Bibbs, Otho [7]

**1.11-16 22-17 2.9-14 25-22 3.8-11 22-18 4.4-8 18x9 5.5x14 24-20 6.16-19 23x16 7.12x19 27-24
8.11-15**

[8.10-15 17x10 9.7x14 31-27 10.8-12~]

8...31-27 9.7-11 27-23 10.2-7

[10.11-16 20x4 11.1-5 23x16 12.3-7 4x9 13.6x31 24-20 14.31-22 30-26 15.22x31 32-27 16.31x24
28x19 x]

10...23x16 11.8-12 24-19 12.15x24 28x19 13.11-15 29-25

[13...32-28 14.15x24 28x19 15.10-15 (15.14-18 26-23 16.18x27 19-15 x) 15...17x10 16.15x24
20x27 17.12x19 27-23 18.6x15 23x16 19.3-8 16-12 20.8-11 26-23 21.7-10 30-26 22.11-16 12x19
23.15x24 23-19 24.24x15 26-23 25.10-14 29-25=]

**14.15x24 20x27 15.12x19 27-23 16.6-9 23x16 17.9-13 25-22 18.14-18 22x6 19.13x31 6-2 20.31-13
2x11 21.3-7 11x2 22.1-6 2x9 23.13x20 1-1**

8. Kuperman, Iser - Bibbs, Otho

Bibbs, Otho [8]

**1.11-16 24-19 2.8-11 22-17 3.11-15 17-13 4.15x24 28x19 5.7-11 25-22 6.11-15 22-17 7.15x24
27x11 8.3-8 26-22 9.8x15 22-18 10.15x22 17x26 11.10-15 21-17 12.4-8 32-28 13.8-11 26-22
14.6-10 13x6 15.2x9 17-13 16.9-14 31-26**

[16...23-19 17.15x24 28x19 18.1-6 31-27 19.14-17 19-15 20.17x26 15x8 21.12x3 30x23=]

17.14-17 29-25 18.17-21 28-24 19.1-6 23-18 20.12-16 24-20 21.5-9 26-23 22.15-19 2-0

9. Kuperman, Iser - Bibbs, Otho

Bibbs, Otho [9]

**1.9-13 22-18 2.10-15 26-22 3.7-10 21-17 4.2-7 23-19 5.6-9 18-14 6.9x18 24-20 7.15x24 22x6
8.1x10 28x19 9.13x22 25x18 10.10-15 19x10 11.7x23 27x18 12.11-15 18x11 13.8x15 31-27 14.3-7
27-24 15.7-10 29-25 16.5-9 25-22 17.4-8 30-26 18.10-14 26-23 19.15-18! 22x15 20.8-11 15x8
21.12x3 24-19 22.14-17 19-15 23.17-21 20-16 24.21-25 16-11 25.9-13 23-18 26.25-29 18-14
27.29-25 14-10 28.25-29 10-6 29.3-7 11x2 1-1**

10. Kuperman, Iser - Bibbs, Otho

Bibbs, Otho [10]

1.11-15 24-20 2.15-19 23x16 3.12x19 22-17 4.8-11 17-13 5.4-8 25-22 6.8-12 29-25 7.11-16 20x11
8.7x16 21-17 9.19-23 27x18 10.9-14 18x9 11.5x21 22-18 12.3-7 18-14 13.10x17 13x22 14.7-10
22-18 15.2-7 28-24 16.7-11 26-23 17.10-15 25-22 18.6-9 24-19 19.15x24 32-28 20.24-27 31x24
21.16-20 24-19 22.11-16 30-26 23.1-5 19-15 24.9-14 18x9 25.5x14 1-1

11. Brown, John - Kuperman, Iser

Brown, John [11]

1.11-15 23-19 2.7-11 27-23 3.9-14 24-20 4.15x24 20x27 5.11-16 22-17 6.8-11 25-22 7.16-20 29-25
8.11-16 28-24 9.16-19 24x15 10.10x19 23x16 11.20x11 17x10 12.6x15 21-17 13.11-16 26-23
14.16-19 23x16 15.12x19 27-23 16.19x26 30x23 17.5-9 31-27 18.4-8 27-24 19.8-11 25-21 20.3-8
32-28 21.2-7 24-19 22.15x24 28x19 23.1-6 22-18 24.9-13 17-14 25.6-10 19-16 26.11x20 23-19
27.10x17 21x14 1-1

12. Kuperman, Iser - Brown, John

Brown, John [12]

1.11-16 23-18 2.16-20 24-19 3.10-15 19x10 4.7x23 26x19 5.8-11 30-26 6.3-7 19-16 7.12x19 27-24
8.20x27 31x8 9.4x11 26-23 10.6-10 23-19 11.1-6 28-24 12.9-13 32-28 13.5-9 24-20 14.9-14 22-17
15.13x22 25x9 16.6x13 19-16 17.10-14 16-12 18.7-10 29-25 19.13-17 28-24 20.10-15 24-19
21.15x24 20x27 22.2-6 27-24 23.6-10 24-20 1-1

13. Kuperman, Iser - Carter, Mack

Carter, Mack [13]

1.11-15 22-17 2.8-11 17-14 3.9x18 23x14 4.10x17 21x14 5.12-16 14-10 6.7x14 24-19 7.15x24
28x12 8.6-10 25-22 9.2-7 27-23 10.4-8 32-28 11.5-9 28-24 12.11-15
[12.14-17 22x15 13.11x20 31-27 14.8-11 26-23 15.11-15 29-25 16.7-11 25-22 17.3-7 22-17
18.7-10]

12...24-20 13.7-11?! An aggressive move to pressure the opponent. 23-18

[Carter could not count all complications after the 13...30-25! and chose to regroup. 14.1-6 22-18
15.15x22 25x18 16.14-17 23-19-+]

14.14x23 26x19 15.15x24 20x27 16.11-15 29-25 17.9-14 25-21 18.8-11 22-17 19.15-19 27-23

[19...30-26]

20.19x26 30x23 21.11-15 31-27 22.1-6 17-13

[22...27-24 23.3-7 24-19 (23...12-8 24.14-18 23x14 25.15-18 14x23 26.7-11 8x15 27.10x26 24-19
28.26-30 19-15 29.30-16 17-14 30.16-2 14-10 31.6-9 10-6 ; 23...24-20 24.7-11 17-13 25.6-9 13x6
26.10x1 23-19 27.15x24 20x27 28.14-18 21-17 29.1-6 27-24 30.18-23 24-20 31.23-26 20-16
32.11x20 12-8) 24.15x24 12-8]

23.6-9 13x6 24.10x1 27-24 25.1-6 23-19 26.6-10 19-16?

[26...24-20 27.15x24 20x27 28.10-15 27-23 29.15-18 21-17=]

**27.14-18 21-17 28.18-23 17-13 29.10-14 24-19 30.15x24 16-11 31.23-27 11-7 32.3x10 12-8
33.27-31 8-3 34.24-28 13-9 35.14x5 3x17 36.31x13 2-0**

14. Cox, Valentine - Kuperman, Iser

Cox, Valentine [14]

1.11-15 23-19 2.8-11 26-23 3.9-13 30-26 4.6-9 24-20 5.15x24 28x19 6.11-16 20x11 7.7x16 22-17
8.13x22 26x17 9.9-13 17-14 10.10x17 21x14 11.2-7 25-22 12.7-10 14x7 13.3x10 29-25 14.5-9

27-24 15.16-20 23-18 16.20x27 32x23 17.4-8 31-27 18.9-14 18x9 19.13x6 22-18 20.6-9 25-22
21.1-6 22-17 22.9-13 18-14 23.13x22 14x7 24.8-11 7x16 25.22-25 16-11 26.6-10 23-18 27.25-29
1-1

15. Kuperman, Iser - Cox, Valentine

Cox, Valentine [15]

1.11-16 23-18 2.16-20 26-23 3.12-16 22-17 4.9-13 18-14 5.13x22 25x18 6.10x17 21x14 7.8-12
29-25 8.6-9 24-19 9.2-6 30-26 10.7-10 14x7 11.3x10 26-22 12.9-13 18-15 13.5-9 22-18 14.10-14
25-21 15.4-8 31-26 16.6-10 15x6 17.9x2 18x9 18.13x6 26-22 19.8-11 22-18 20.11-15 18x11
21.16x7 23-18 22.7-10 18-15 23.2-7 21-17 24.1-5 28-24 25.5-9 17-13 26.7-11 15x8 27.12x3 32-28
28.10-14 19-15 29.6-10 15x6 30.9x2 24-19 1-1

16. Faal, Momodou - Kuperman, Iser

Faal, Momodou [16]

1.12-16 24-20 2.8-12 28-24 3.10-15 23-19 4.16x23 26x10 5.6x15 27-23 6.7-10 22-17 7.9-14 17-13
8.2-6 25-22 9.3-8 24-19 Other plans were:

[9...22-17 10.12-16 (10.15-18)]

[9...22-18 10.15x22 30-26]

[9...23-19! 10.5-9 30-25! 11.11-16 20x18 12.14x16 22-18 13.8-11

[13.16-20 18-14 x]

[13.10-14 31-27 14.14x23 27x18 15.8-11 (15.16-20 24-19 16.8-11 25-22 17.4-8 21-17 18.11-16
19-15 19.8-11 15x8 20.12x3 17-14) 15...24-20 16.16-19 25-22 17.12-16 29-25 18.11-15 20x11
19.15x8 18-14 20.9x18 22x24 x]

13...21-17 14.1-5 (14.4-8 24-20) 14...31-27 15.4-8 25-22 16.16-20 24-19 17.11-16 27-23 x]

10.15x24 20x27 11.11-15 22-17 12.8-11 29-25 13.15-18

[13.4-8 25-22 14.15-18

[14.12-16? 22-18 15.15x22 17x26 16.16-20 23-19 17.11-15 (17.8-12 26-22 out) 17...27-24

[17...32-28? 18.15x24 28x19 looks promising but 19.14-18! 30-25 (19...26-23? 20.18-22)
20.10-15! 19x10 21.6x15 26-23

[21...21-17 22.15-19! 25-21 23.19-24 26-23 24.24-28 23x14 25.8-11 13-9

[25...14-10 26.28-32 17-14 27.32x09 13x6 28.5-9 (or 28.11-15 10x19 29.1x10=) 28...6x13
29.20-24 13-9 30.24-28 9-6 31.11-15 10x19 32.1x10 19-16 33.28-32 21-17 34.32-18 17-14
35.10x17 (35.18x9 16-12 36.9-18 31-27 37.18x32 12-8=) 35...31-27 36.18x32 16-11=]

26.28-32 27-23 27.32x18 14x23 28.5x14 17x10 29.20-24=]

22.15-19! 23x14

[22...23x16 23.20x11 31-26 24.5-9 13x6 25.1x10 21-17

[25...26-23 26.18-22 25x18 27.10-15 18-14 28.11-16 14-10 (28...21-17 29.15-19 23-18
30.19-23 27-24 31.23-26=) 29.15x6 27-24 30.6-10 24-19 31.8-12 21-17 32.10-15 19x10
33.16-19 23x16 34.12x19=]

26.10-15 26-23 (26...17-13 27.15-19 13-9 28.11-16 9-6 29.8-12 26-22 30.19-23 22x15
31.23x32 6-1 32.32-14 1-5 33.14-21 25-22 34.16-20 5-27 35.21-7 22-18 36.7-2 27-31
37.20-24 31x20 38.12-16 20x11 39.2x20 15-10=) 27.18-22 17x26 28.11-16 25-22

[28...27-24 29.16-20 23-19 30.20x27 19x10 31.27-31 26-23 (31...25-22 32.8-11 10-6
33.11-15 6-2 34.15-18 22x15) 32.31-24 10-7 33.8-11 7x16 34.24-15=]

29.8-12 22-17 30.16-20 17-13 31.15-19 23x16 32.12x19 13-9 33.19-24 27-23 34.24-28 23-18
35.28-32 9-5=]

23.19-24 27-23 24.24-28 23-18 25.20-24 14-10 26.5-9! 13x6 27.28-32 18-15 28.8-12 (

28.24-27 31x24 29.32-14 10x17 30.1x28=) 28...31-26

[28...21-17 29.12-16 25-21 this and other funny lines end in a draw. (29...17-13 30.32-9 6-2 31.9-27 2x20 32.27-32 20x27 33.32x29)]

29.32-14 10x17 30.1x19 17-13 31.24-28 13-9 32.28-32 9-5 33.12-16 21-17 34.32-28 17-14 35.16-20 5-1 36.19-23 26x19 37.28x30=]

18.20x27 31x24 19.8-11

[19.14-18 32-27 20.8-11 26-23 21.18-22 21-17 22.22-26 23-18 23.15x22 30x23 24.22-26 23x30 25.5-9 27-23]

[25...30-25? 26.9-14 25-21 (26...25-22 27.14x21 27-23 28.10-14 24-20 29.14-17) 27.14-18 17-14 28.18x9 24-20 29.10-15 19x10 30.6x15 13x6 31.1x10 27-23 32.10-14=]

26.9-14 24-20 27.14x21 13-9! 28.6x13 19-16 29.11-15 16-12 30.10-14 12-8 31.15-18 23-19 32.18-22 8-4 33.21-25 30x21 34.22-26 19-16 35.26-30 16-12 36.30-23 4-29 37.14-17 21x14 38.23x5 12-8 three kings coming]

19...32-27 20.14-18 26-23 21.18-22 21-17 22.22-26 23-18 23.15x22 30x23 24.5-9 17x26 25.11-15 (25.9-14 24-20 26.11-15 27-24 27.1-5 20-16 28.15-18 16-11 29.18x20 26-23 30.14-17 13x22 31.6-9 11-8 32.10-15 19x10 33.20-24 23-19 34.24x6 8-3) 25...19-16 26.15-19 24x15 27.10x12 23-18 28.12-16 26-23 win]

14...22x15 15.10x26 17x10 16.6x15 30x23 17.12-16 21-17 18.15-19 23-18 19.19-23 17-14 20.16-20 13-9 21.8-12 27-24 22.20x27 31x24 23.23-26 18-15 24.11x18 14x30 25.5x14 24-19=]

13...23-19 Key position 14.11-15?

[14.11-16! Let him shoot!!! 31-26 (14...25-22 15.18x25 31-26 16.16x23 27x2 17.1-6 2x9 18.5x14 26-22 19.25x18 30-26 20.12-16 26-22 21.18x25 21x30 22.14x21 13-9 23.10-14 9x18 24.16-19 18-14 25.19-23 14-10 26.23-26 30x23 27.21-25=) 15.16x23 26x19 16.4-8]

[16.5-9 is a draw too 27-24 17.4-8 32-28]

[17...32-27 18.8-11 24-20 looks bad, isn't it? 19.12-16!]

[19.11-16 20x11 20.10-15 19x10 21.14x16 17-14 22.18-23 27x18 23.16-19 14x5 24.19-24 30-26 25.24-27 26-23 26.27-32 25-22 27.6-10]

[27.12-16 22-17 28.16-20 18-14 29.32x9 5x14 30.20-24 14-9 31.6-10 (31.24-27? 9x2 32.27-32 2-20 33.32-18 20-24 34.18-23 24-28 35.23-32 13-9 36.32x5 28-32 37.1-6 17-14 38.5x18 32x2) 31...9-6 32.24-27 6x15 33.1-6 17-14]

[33...15-11 34.27-31 11-8 (34...17-14 35.31-27) 35.6-9 13x6 36.31x2]

34.27-31 14-9 (34...15-11 35.31-27) 35.31-22 9x2 36.22x4]

27...23-19 28.32x14 22-17]

[19.10-15 19x10 20.14x7 17-14]

19...19x12 20.18-23 27x18 21.14x23 20-16 22.11x20 12-8 23.23-27 8-3 24.9-14 25-22 25.27-32+-]

18.8-11 19-15 19.10x19 24x22 20.11-16 17x10 21.6x15 13x6 22.1x10 30-26

[22...22-17 23.15-19 17-14 24.10x17 21x14 25.19-24 28x19 26.16x23 14-9 27.23-27 9-5]

[27...25-22 28.27-31 22-18 (28...30-26 29.12-16 9-6 30.16-19 6-2 31.19-23 26x19) 29.31-27 18-14 30.27-20 30-25 31.20-11]

28.27-31=]

23.16-20=]

16...30-26 17.5-9 (17.8-11 19-15 18.10x19 17x10 19.6x15 13-9 20.5x14 27-23 21.18x27 32x7 win) 17...19-16]

[17...26-22 18.10-15! 19x10 (18...17x10 19.15x31 22x15 20.9-14 10x17 21.6-9 13x6 22.31x2) 19.14x7 22x15 20.7-10 with a much stronger ending 25-22 21.10x19 22-18 22.19-23 17-14 23.23-26 14x5 24.26-31 27-23 25.31-20+-]

18.12x19 27-23 19.18x27 32x16 20.8-11 16x7 21.10x3 17x10 22.6x15 13x6 23.1x10 21-17 24.15-19 25-22 25.19-24 17-14 26.10x17 22x13 27.24-27 26-23 28.27x18 13-9=]

14...30-26 15.15x24 27x20 16.4-8

[16.5-9 26-23 Precise execution of the standard plan 17.18x27 32x23 18.4-8 31-27! 19.8-11 25-22 20.11-15 22-18 21.15x22 17x26 22.10-15 20-16 23.12x19 23x16 24.14-18 27-24 25.9-14 16-12 win]

16...26-22 17.18-23

[17.5-9 22x15 18.10x19 17x10 19.6x15 13x6 20.1x10 20-16 21.19-24 16-11]

17...22-18 18.23-26 18x2 19.26-30 20-16!

[A longer way was 19...2-6 20.10-14 17x10 21.8-11 25-22 22.30-26 (22.30-23 6-2 23.23-30 2x16 24.12x19 22-18) 22...22-18 23.26-30 18-15 24.11x18 6-2 25.18-22 13-9 26.5x7 2x29]

20.12x19 31-26 21.30x23 17-14 22.10x17 21x14 23.23x9 13x6 24.1x10 25-22 25.19-24

[25.10-15 2-11 26.15-18 11x4 27.18x25 4x29 28.19-23 29-22 29.5-9 22-31 30.9-14 31-13 31.14-18 13-17]

[25.8-12 2-16 26.10-14 (26.10-15 16x23 27.15-19 23x16 28.12x19 32-27 29.5-9 22-17 ; 26.19-24 16-20 27.24-28 20-11 28.5-9 11-18 29.9-13 18-11 30.10-14 11-7 31.13-17 22x13 32.14-18 7-14 33.18x9 13x6 34.12-16 6-2) 26...16x9 27.5x14 32-27 28.12-16 27-23 29.16-20 23-19]

25...32-27 26.24x31 2-13 27.31x17 13x4 0-2

17. Faal, Momodou - Kuperman, Iser

Faal, Momodou [17]

1.11-16 22-17 2.9-14 25-22 3.8-11 22-18 4.5-9 17-13 5.16-20 24-19 6.11-16 29-25 7.7-11 18-15 8.11x18 26-22 9.2-7 22x15 10.7-11 15x8 11.4x11 25-22 12.1-5 30-25 13.3-7 22-18 14.14-17 21x14 15.10x17 13x22 0-2

18. Faal, Momodou - Kuperman, Iser

Faal, Momodou [18]

1.12-16 24-20 2.8-12 28-24 3.4-8 23-18 4.10-15 26-23 5.6-10 30-26 6.9-13 21-17 7.5-9 24-19 8.15x24 17-14 9.10x17 18-15 10.11x18 23x5

[10...20x4 11.9-14 27x20 (11...22x15 12.17-21 27x20 13.21x30 23-19 14.30x16 20x11 15.7x16 Also a strange game) 12.18x27 32x23 13.17-21 4-18 14.21x30 18x5 15.30-21 into a strange game]

11.8-11?? Momodou did not find

[11.7-10! 20x4 12.10-15! 27x20 13.17-21 4x18 14.21x14 with at least even position]

11...25-21 12.24-28 21x14 13.16-19 29-25 14.19-24 22-18 15.2-6 25-21 16.6-9 18-15 17.11x18 14x23 18.9-14 26-22 19.7-10 23-18 20.14x23 27x18 21.24-27 31x24 22.28x19 18-15 0-2

19. Faal, Momodou - Kuperman, Iser

Faal, Momodou [19]

1.10-15 22-17 2.11-16 23-19 3.16x23 26x10 4.6x15 30-26 5.8-11 26-23 6.9-13 23-19 7.13x22 19x10 8.7x14 25x9 9.5x14 29-25 10.3-7 25-22 11.7-10 24-20 12.1-6 27-23 13.6-9 28-24 14.4-8 32-28 15.11-15 24-19 16.15x24 28x19 17.8-11 31-26 18.2-7 22-18 1-1

20. Faal, Momodou - Kuperman, Iser

Faal, Momodou [20]

1.10-15 22-17 2.11-16 23-19 3.16x23 26x10 4.6x15 17-13 5.12-16 13x6 6.1x10 25-22 7.10-14 22-17 8.16-19 17x10 9.7x14 27-23 10.19x26 30x23 11.3-7 29-25 12.7-10 25-22 13.5-9 24-19

14.15x24 28x19 15.8-11 22-18 16.9-13 18x9 17.13x6 23-18 18.6-9 32-27 19.10-14 27-23 20.2-7 31-26 21.7-10 26-22 22.4-8 22-17 23.9-13 18x9 24.13x6 23-18 25.8-12 18-14 26.11-16 14x7 27.16x23 1-1

21. Faal, Momodou - Kuperman, Iser

Faal, Momodou [21]

1.12-16 24-20 2.8-12 28-24 3.4-8 23-18 4.10-15 26-23 5.6-10 30-26 6.9-13 21-17 7.1-6 Before he played hg3 and lost. 24-19 8.15x24 17-14 9.10x17 18-15 10.11x18 20x4 11.17-21 23x14 12.21x23 27x20 13.23-26 14-9 14.26x17 29-25 15.5x14 25-21 16.7-10 The white position only looks helpless 32-27?

[16...4-25! 17.17-22 25x5 18.6-9 5x7 19.3x10=]

17.17-22! 4x29 18.12-16! 20x11 19.14-18 29x15 20.10x19 2-0

22. Faal, Momodou - Kuperman, Iser

Faal, Momodou [22]

1.12-16 24-20 2.8-12 28-24 3.4-8 23-18 4.10-15 26-23 5.7-10 30-26 6.3-7 18-14 7.10x17 21x14 8.9x18 23x14 9.6-10 22-17 10.2-6 32-28 11.16-19 17-13 12.10x17 13x22 13.6-9 22-18 14.15x22 25x18 15.9-14 18x9 16.5x14 24x15 17.11x18 29-25 18.1-6 27-24 19.7-11 26-22 20.18-23 22-18 21.23-26 18x2 22.26-30 2x16 23.12x19 1-1

23. Faal, Momodou - Kuperman, Iser

Faal, Momodou [23]

1.12-16 24-20 2.8-12 28-24 3.4-8 23-18 4.10-15 26-23 5.6-10 30-26 6.9-13 21-17 7.1-6 25-21 8.6-9 17-14 9.10x17 21x14 10.7-10 14x7 11.3x10 24-19 12.15x24 32-28 13.10-14 28x19 14.14-17 27-24 15.2-6 19-15 16.17-21 22-17 17.13x22 26x17 18.21x14 29-25 19.14-17 25-21 20.9-13 21x14 21.16-19 23x7 22.8-11 15x8 23.12x17 18-15 24.17-21 15-11 25.21-25 11-8 26.25-29 8-3 27.29-25 24-19 28.6-9 3-21 29.25-8 21-7 1-1

24. Faal, Momodou - Kuperman, Iser

Faal, Momodou [24]

1.12-16 24-20 2.8-12 28-24 3.4-8 23-18 4.10-15 26-23 5.7-10 30-26 6.2-7 18-14 7.9x18 23x14 8.10x17 21x14 9.6-10 25-21 10.10x17 21x14 11.16-19 32-28 12.1-6 22-18 13.15x22 26x17 14.11-15 17-13 15.8-11 31-26 16.12-16 27-23 17.7-10 14x7 18.3x10 23-18 19.15x31 24x8 20.31-27 20x11 21.27-20 8-4 22.20x2 28-24 23.2-20 24-19 24.20-2 4-25 25.10-14 25-15 26.6-9 13x6 27.2x13 15-25 28.13-26 19-15 29.14-17 25-30 30.26-12 1-1

25. Faal, Momodou - Kuperman, Iser

Faal, Momodou [25]

1.12-16 24-20 2.8-12 28-24 3.4-8 23-18 4.10-15 26-23 5.6-10 30-26 6.9-13 21-17 7.1-6 25-21 8.6-9 17-14 9.10x17 21x14 10.7-10 14x7 11.3x10 Mr. Faal innovates the opening in every game, this attempt backfires. 29-25 12.9-14 18x9 13.5x14 25-21 14.2-7 22-18 15.15x22 26x17 16.13x22 23-19 17.16x23 27x9 18.12-16 32-28 19.8-12 9-5 20.10-14 5-1 21.14-17 21x14 22.22-25 24-19 23.16x23 31-27 24.23x32 1-5 25.32x9 5x29 0-2

26. Faal, Momodou - Kuperman, Iser

Faal, Momodou [26]

1.11-15 22-17 2.15-19 24x15 3.10x19 23x16 4.12x19 17-14 5.9x18 27-24 6.19-23 26x19 7.5-9 19-16 8.9-14 16-12 9.8-11 24-20 10.6-10 28-24 11.1-6 25-22 12.18x25 29x22 13.10-15 24-19 14.15x24 20x27 15.11-15 30-26 16.6-10 27-23 17.4-8 22-18 18.15x22 26x17 19.8-11

[19.7-11 31-26 20.11-15 26-22 21.2-7 32-27 (21...32-28? 22.15-19 23x16 23.8-11 17-13 24.11x20 21-17 25.14x21 13-9 26.20-24 28x19 27.21-25 22x29 28.10-15 19x10 29.7x5 x) 22.15-19 23x16 23.8-11 27-23 24.11x20 22-18 25.20-24 18x9 26.10-14 9x18 27.24-28 23-19 28.28-32 18-14 29.32x9 17-14 30.9x16 12x19 31.7-10 21-17=]

19...31-26 20.11-15 26-22 21.2-6?

[21.15-18! 22x6 22.2x9 17x10 23.7x14 32-27 (23...23-19 24.14-18 19-16 25.18-23 16-11 26.23-26 11-8 27.26-31 8-4 28.9-14 4-15 29.31-20 15-22 30.20-7 22-31 31.14-18=) 24.9-13 27-24 25.13-17 24-19 26.17-22 19-15 27.14-17 21x14 28.22-25 14-10 29.25-29 23-18 30.29-25 10-6 31.3-7 12-8 32.25-29 8-4 33.7-11 15x8 34.29x1=]

21...32-27 22.7-11 27-24 23.3-7 24-20 24.14-18 23x14 25.15-19 22-18 26.10-15 12-8 27.15x13 8x24 28.13-17 14-9 29.6x13 21x14 0-2

27. Kuperman, Iser - Faal, Momodou

Faal, Momodou [27]

1.11-16 24-19 2.8-11 22-17 3.9-14 25-22 4.16-20 17-13 5.11-15 22-17 6.15x24 28x19 7.7-11 19-16 8.12x19 23x7 9.2x11 26-23 10.11-15 23-18 11.15x22 17x26 12.10-15 29-25 13.6-9 13x6 14.1x10 25-22 15.5-9

[An annoyance. The intend was to play 15.4-8 as in Russian checkers but 21-17 16.14x21 30-25 17.21x23 27x4 x]

15...22-17 16.4-8

[16.9-13 26-23 17.13x22 23-18 18.14x23 27x25 19.10-14 (19.4-8 21-17 20.8-11 25-21 21.15-18 31-27) 19...31-27 20.15-19 25-22 21.19-24 27-23 22.24-27 22-17 23.27x18 17x10 24.18-22 21-17 25.22x13 10-6]

16...17-13 17.8-11?

[17.8-12 was a quick draw 13x6 18.10x1 30-25

[18...26-22 19.3-7 (19.1-6 22-17 20.6-10 17-13 21.12-16 21-17 22.14x21 13-9) 19...31-26 20.15-19 (20.7-10 26-23 21.15-19 23x16 22.20x11 22-18 23.14x23 27x18 24.10-15 18-14=) 20...22-17 21.7-10 26-23 22.19x26 30x23]

19.1-6 25-22 20.12-16 22-17 21.6-10 17-13 22.16-19]

[The intended move was of course 17.3-7 but it too falls to the Pool rules: 13x6 18.10x1 21-17 19.14x21 30-25 20.21x23 27x4]

17...13x6 18.10x1 27-23! 19.15-18 23-19 20.1-6 19-15 21.11-16 15x22 22.16-19 22-17 23.6-10 26-23 24.19x26 30x23 25.3-8 23-19 0-2

28. Kuperman, Iser - Faal, Momodou

Faal, Momodou [28]

1.11-15 23-18 2.8-11 26-23 3.10-14 24-20 4.6-10 27-24 5.3-8 24-19 6.15x24 20x27 7.10-15 28-24 8.1-6 32-28 9.7-10 30-26 Forcing the shot

[The usual play is 9...24-19 10.15x24 28x19 11.11-15 18x11 12.8x24 27x20 13.4-8]

10.15-19 24x15 11.10x19 23x7 12.14x32 7-3 13.9-13 28-24!

[Faal decided against catching the king at 3 checkers cost, hoping for a miracle. 13...31-27

14.32x30 21-17 15.30x14 3x21]

14.8-11 24-19! Following the brilliant plan started with the previous move **15.11-16?** Kuperman falls into the trap! **26-23! 16.32x9 21-17! 17.16x23 17-14!** The "King" is caught!!! **18.9x18 22x15 19.4-8 25-22 20.6-9 3-21 21.23-26 31-27 22.26x17 21x3 23.9-14 3x21 24.8-11 15x8 25.12x3 21-10 26.2-7 10-15 27.13-17 15-6 28.7-11 6-13 29.17-21 13-2 30.11-15 27-23 31.3-8 2-20 32.5-9 23-19 33.15x24 20x5 0-2**

29. Kuperman, Iser - Faal, Momodou

Faal, Momodou [29]

1.11-16 24-19 2.8-11 22-17 3.10-15 19x10 4.6x15 17-14 5.9x18 23x14 6.2-6 21-17 7.4-8 25-21 8.7-10 14x7 9.11x2 17-14 10.8-11 29-25 11.2-7 21-17 12.6-9 26-23 13.9x18 23x14 14.7-10 14x7 15.3x10 27-23 16.5-9 28-24 17.16-20 31-27 18.9-13 25-22 19.1-6 30-25 20.6-9 25-21 21.9-14 22-18 22.15x22 17x26 23.13-17 24-19 24.11-15 19-16 25.20x11 27-24 26.15-18 24-19 27.18x27 32x23 28.11-15 19-16 29.12x19 23x16 30.15-19 16x23 31.10-15 2-0

30. Kuperman, Iser - Faal, Momodou

Faal, Momodou [30]

1.11-15 23-18 2.8-11 26-23 3.10-14 24-20 4.6-10 27-24 5.3-8 24-19 6.15x24 20x27 7.12-16 22-17 8.16-20 28-24 9.11-15 18x11 10.8x15 30-26 11.7-11 17-13 12.4-8 13x6 13.2x9 26-22 14.9-13 23-19 15.8-12 31-26 16.5-9 26-23 17.1-5 22-18 18.15x22 25x18 19.13-17 32-28 20.11-16 18-15 21.17-22 15x13 22.22-26 23x30 23.16x32 29-25 24.20x27 28-24 25.27x20 25-22 26.32-28 2-0

31. Kuperman, Iser - Faal, Momodou

Faal, Momodou [31]

1.11-15 23-18 2.8-11 26-23 3.10-14 24-20 4.6-10 27-24 5.3-8 24-19 6.15x24 20x27 7.12-16 22-17 8.16-20 30-26 9.1-6 28-24 10.11-15 18x11 11.8x15 23-19 12.15-18 25-22 13.18x25 29x22 14.7-11 17-13 15.11-15 26-23 16.4-8 19-16 17.20x11 22-17 18.8-12 23-19 19.11-16 24-20 20.15x24 20x11 21.14-18 27x20 22.10-15 17-14 23.15x8 14x23 24.9-14 23-19 25.6-9 13x6 26.2x9 32-27 27.14-17 21x14 28.9x18 19-16 29.12x19 27-23 1-1

32. Kuperman, Iser - Faal, Momodou

Faal, Momodou [32]

1.11-16 24-19 2.8-11 22-17 3.9-14 25-22 4.16-20 17-13 5.11-15 29-25 6.15x24 28x19 7.4-8 22-17 8.7-11 19-16 9.12x19 23x7 10.2x11 26-23 11.11-15 25-22 12.15-19 23x16 13.20x11 22-18 14.14x23 27x18 15.8-12 32-27 16.12-16 27-24 17.10-15 31-27 18.15x22 17x26 19.16-20 26-23 20.11-15 30-26 21.5-9 21-17 22.3-7 26-22 23.7-10 22-18 24.15x22 17x26 25.10-15 23-19 26.15-18 27-23 27.20x27 23x5 28.27-32 19-15 1-1

33. Kuperman, Iser - Faal, Momodou

Faal, Momodou [33]

1.11-16 24-19 2.8-11 22-17 3.11-15 28-24 4.16-20 17-14 5.9x18 23x14 6.10x17 21x14 7.7-10 14x7 8.3x10 26-22 9.5-9 22-17 10.4-8 25-21 11.9-14 30-26 12.15-18 17-13 13.8-11 29-25 14.11-15 26-22 15.2-7 31-26 16.7-11 26-23 17.11-16 21-17 18.14x30 23x7 19.16x23 27x11 20.20x27 32x23 21.30x19 1-1

34. Kuperman, Iser - Faal, Momodou

Faal, Momodou [34]

1.11-15 23-18 2.8-11 26-23 3.10-14 24-20 4.6-10 27-24 5.3-8 24-19 6.15x24 20x27 7.10-15 28-24
8.9-13 18x9 9.13x6 30-26 10.5-9 22-17 11.12-16 24-20 12.8-12 32-28 13.4-8 17-14 14.9x18 23x14
15.1-5 25-22 16.6-9 29-25 17.9x18 26-23 18.2-6 23x14 19.16-19 31-26 20.6-9 22-17 21.9x18 25-22
22.18x25 21x30 23.7-10 27-23 24.12-16 26-22 25.19x26 30x23 26.15-19 23-18 27.8-12 18-14
28.10-15 17-13 29.19-23 13-9 30.23-27 9-6 31.27-31 22-18 32.15x22 6-2 33.22-25 14-10 34.25-29
10-6 35.5-9 6x13 36.29-18 28-24 37.18-15 13-9 38.15x28 9-5 39.31-24 20x27 40.16-20 2x16
41.20x11 2-0

35. Kuperman, Iser - Faal, Momodou

Faal, Momodou [35]

1.11-15 23-18 2.8-11 26-23 3.10-14 24-20 4.6-10 27-24 5.3-8 24-19 6.15x24 20x27 7.11-15 18x11
8.8x15 28-24 9.14-18 23x14 10.10x26 30x23 11.4-8 25-22 12.7-10 29-25 13.9-13 21-17 14.1-6
23-18 15.8-11 25-21 16.6-9 27-23 17.2-7 31-27 18.9-14 18x9 19.5x14 23-18 20.14x23 27x18
21.12-16 24-20 22.16-19 18-14 23.19-23 20-16 24.11x20 22-18 1-1

36. Ford, Rembert - Kuperman, Iser

Ford, Rembert [36]

1.11-16 22-18 2.8-11 25-22 3.4-8 29-25 4.16-20 18-14 5.9x18 23x14 6.10x17 21x14 7.12-16 26-23
8.7-10 14x7 9.3x10 22-17 10.8-12 17-13 11.10-14 25-22 12.14-17 22-18 13.17-21 24-19 14.11-15
18x11 15.16x7 23-18 White position is passive. 16.6-9 13x6 17.2x9? Jump to the side is really
weak, gives black a clear attack on the side. 31-26 18.9-13 27-24 19.20x27 32x23 20.5-9 19-16
21.12x19 23x16 22.9-14 18x9 23.13x6 28-24 24.6-10 24-19 25.1-6 26-23 0-2

37. Kuperman, Iser - Ford, Rembert

Ford, Rembert [37]

1.11-15 22-17 2.8-11 17-13 3.11-16 25-22 4.15-19 24x15 5.10x19 22-17 6.4-8 29-25 7.16-20 23x16
8.20x11 28-24 9.12-16 24-20 10.16-19 27-23 11.8-12 23x16 12.12x19 17-14 13.9x18 26-23
14.18x27 31x8 15.3x12 30-26 16.5-9 21-17 17.7-10 26-23 18.10-15 23-19 19.15x24 20x27
20.12-16 27-23 21.9-14 17x10 22.6x15 25-22 23.15-19 23-18 1-1

38. Garrett, James - Kuperman, Iser

Garrett, James [38]

1.9-14 24-19 2.11-16 22-18 3.8-11 18x9 4.5x14 25-22 5.11-15 29-25 6.15x24 28x19 7.7-11 22-18
8.3-7 18x9 9.6x13 27-24 10.11-15 24-20 11.15x24 20x27 12.16-20 25-22 13.12-16 23-18 14.10-14
18x9 15.13x6 22-18 16.7-10 26-22 17.10-15 18x11 18.16x7 30-26 19.6-10 26-23 20.7-11 23-19
21.2-6 19-16 22.11-15 16-12 23.10-14 27-24 24.20x27 32x23 25.6-10 31-27 26.1-5 22-17 27.15-18
17-13 28.10-15 13-9 29.14-17 21x14 30.18-22 9-6 31.22-25 6-1 32.15-18 14-10 33.25-29 23x14
34.29-11 1-6 35.11-20 27-23 36.20-2 6-13 37.2-11 13-2 38.11-20 23-19 39.20-31 10-6 40.31-13 6-1
41.13-31 1-15 0-2

39. Garrett, James - Kuperman, Iser

43. Kuperman, Iser - Langley, William
Langley, William [43]

1.11-16 24-19 2.8-11 22-17 3.11-15 27-24 4.16-20 31-27 5.9-13 17-14 6.10x17 21x14 7.15-18
14-10 8.7x14 26-22 9.3-7 22x15 10.14-17 25-21 11.6-9 21x14 12.9x11 19-15 13.11x18 23x14
14.1-6 29-25 15.4-8 24-19 16.8-11 28-24 17.11-16 25-21 18.16x23 27x18 19.20x27 32x23 20.6-9
23-19 21.2-6 30-25 22.6-10 2-0

44. Langley, William - Kuperman, Iser
Langley, William [44]

1.11-15 23-19 2.8-11 26-23 3.11-16 24-20 4.15x24 20x11 5.7x16 28x19 6.4-8 22-18 7.8-11 25-22
8.9-13 29-25 9.2-7 18-15 10.11x18 22x15 11.16-20 23-18 12.12-16 19x12 13.10x19 25-22 14.6-9
30-26 15.9-14 18x9 16.13x6 22-18 17.5-9 32-28 18.19-24 28x19 19.3-8 12x10 20.6x24 18-15
21.24-28 15-11 22.28-32 27-24 23.20x27 31x24 24.32-28 24-20 25.28-19 26-22 26.9-14 11-8
27.19-15 1-1

45. Kuperman, Iser - Robinson, George
Robinson, George [45]

1.11-15 22-17 2.8-11 25-22 3.11-16 24-19 4.15x24 28x19 5.7-11 17-13 6.11-15 21-17 7.15x24
27x11 8.3-7 22-18 9.7x16 17-14 10.10x17 13x22 11.6-10 31-27 12.4-8 29-25 13.10-14 27-24 14.2-7
23-19 15.16x23
[15.14x23 24-20 16.8-11 19-15]
15...18x27 16.1-6 24-20 17.6-10 25-21 18.8-11 27-23 19.9-13 32-28 20.11-15 23-19 21.15x24
28x19 22.7-11 26-23 23.11-15 30-26 24.15x24 20x27 25.10-15 27-24 26.5-9 21-17 27.14x21 23-18
28.21-25 18x11 29.25x18 11-7 30.13-17 24-19 31.18-22 19-16 32.22x31 7-2 33.12x19 2x12 1-1

46. Kuperman, Iser - Robinson, George
Robinson, George [46]

1.11-16 22-17 2.9-14 24-19 3.8-11 25-22 4.16-20 19-16 5.12x19 23x16 6.6-9 16-12 7.9-13 27-24
8.20x27 32x23 9.11-15 28-24 10.4-8 23-19 11.8-11 26-23 12.1-6 24-20 13.15x24 20x27 14.11-15
22-18 15.15x22 17x26 16.10-15 27-24 17.6-10 23-19 18.7-11 24-20 19.15x24 20x27 20.2-7 27-24
21.14-18 26-22 22.18x25 29x22 23.5-9 30-26 24.9-14 22-17 25.13x22 26x17 26.11-15 31-26
27.15-18 17-13 28.10-15 26-22 29.18x25 21x30 30.7-11 30-25 31.15-18 24-19 32.11-16 19-15
33.18x11 12x19 34.3-7 25-22 35.7-10 22-18 36.14x16 13-9 37.16-19 9-5 38.19-23 5-1 39.11-15 1-5
40.23-26 5-32 41.26-30 32-27 42.30-16 27-32 43.16-11 32-28 44.11-2 28-32 45.2-13 32-28
46.13-22 28-24 2-0

47. Robinson, George - Kuperman, Iser
Robinson, George [47]

1.11-15 23-19 2.8-11 26-23 3.11-16 24-20 4.15x24 20x11 5.7x16 28x19 6.16-20 22-18 7.4-8 25-22
8.9-14 18x9 9.6x13 30-25 10.5-9 22-17 11.13x22 25x18 12.10-14 29-25 13.8-11 25-22 14.11-16
18-15 15.1-5 22-18 16.3-8 31-26 17.9-13 18x9 18.13x6 26-22 19.5-9 22-17 20.9-13 17-14 21.6-10
14x7 22.2x18 23x14 23.16x23 27x18 24.12-16 14-10 25.8-11 10-6 26.20-24 32-28 27.16-19 6-1 0-2

48. Robinson, George - Kuperman, Iser

Robinson, George [48]

1.11-15 21-17 2.9-13 24-20 3.8-11 27-24 4.6-9 25-21 5.9-14 24-19 6.15x24 20x27 7.5-9 28-24
8.11-16 23-18 9.14x23 27x18 10.10-14 17x10 11.7x23 26x19 12.16x23 30-25 13.4-8 22-17
14.13x22 25x27 15.8-11 29-25 16.9-14 25-22 17.11-15 27-23 18.3-7 31-27 19.7-11 23-19 20.14-18
19x10 21.18x25 21x30 22.2-6 27-23 23.6x15 32-28 24.1-6 24-19 25.15x24 28x19 26.6-10 30-26
27.11-15 19-16 28.12x19 23x16 29.10-14 1-1

49. Robinson, George - Kuperman, Iser

Robinson, George [49] (up)

1.11-16 22-17 2.9-14 25-22 3.8-11 23-18 4.14x23 27x18 5.16-20 17-14 6.20x27 31x24 7.10x17
21x14 8.11-16 29-25 9.4-8 24-20 10.8-11 28-24 11.6-10 25-21 12.10x17 22x13 13.7-10 18-14
14.10x17 13x22 15.5-9 32-27 16.3-7 27-23 17.7-10 21-17 18.10-15 17-13 19.2-7 13x6 20.1x10
23-19 21.16x23 26x19 0-2

50. Kuperman, Iser - Shell, James

Shell, James [50]

1.11-15 22-17 2.8-11 17-13 3.11-16 23-19 4.16x23 26x19 5.9-14 27-23 6.7-11 24-20 7.15x24 28x19
8.3-8 32-28 9.2-7 25-22 10.14-17 21x14 11.10x26 31x22 12.7-10 28-24 13.10-14 22-18 14.6-10
18x9 15.5x14 29-25 16.11-15 20-16 17.14-17 13x22 18.10-14 19x17 19.12x28 17-14 20.28-32
22-18 21.8-11 25-21 22.11-15 18x11 23.32x8 30-26 24.1-6 2-0

51. Shell, James - Kuperman, Iser

Shell, James [51]

1.11-16 22-17 2.9-14 25-22 3.16-20 22-18 4.8-11 18x9 5.5x14 29-25 6.11-15 25-22 7.15-19 24x15
8.10x19 17x10 9.6x15 23x16 10.20x11 28-24 11.4-8 22-17 12.12-16 24-20 13.2-6 17-14 14.1-5
21-17 15.6-9 26-23 16.9x18 23x14 17.7-10 14x7 18.3x10 27-23 19.5-9 17-13 20.9-14 30-25 21.8-12
25-21 22.15-19 23-18 23.14x23 13-9 24.10-15 9-6 25.23-26 31x22 26.19-23 6-1 27.16-19 1-5
28.12-16 5x27 29.19-24 27-31 0-2

52. Small, Lester - Kuperman, Iser

Small, Lester [52]

1.11-15 23-19 2.8-11 26-23 3.9-13 30-26 4.6-9 24-20 5.15x24 28x19 6.9-14 19-16 7.12x19 23x16
8.5-9 27-23 9.1-5 22-18 10.10-15 16-12 11.15x22 26x10 12.7x14 23-19 13.13-17 31-26 14.11-15
19x10 15.14x7 21x14 16.9x18 32-27 17.4-8 26-23 18.2-6 23x14 19.6-9 25-21 20.9x18 21-17 1-1

53. Small, Lester - Kuperman, Iser

Small, Lester [53]

1.11-15 22-17 2.15-19 24x15 3.10x19 23x16 4.12x19 17-14 5.9x18 27-24 6.19-23 26x19 7.5-9
24-20 8.6-10 19-16 9.10-14 28-24 10.8-11 30-26 11.1-5 25-22 12.18x25 21x30 13.4-8 16-12
14.11-15 24-19 15.15x24 20x27 16.14-18 27-24 17.9-14 24-20 18.5-9 29-25 19.9-13 32-27 20.8-11
26-22 21.11-15 31-26 22.7-11 27-24 23.11-16 1-1

54. Kuperman, Iser - Small, Lester

Small, Lester [54]

1.11-15 23-19 2.8-11 27-23 3.9-14 24-20 4.15x24 20x27 5.4-8 28-24 6.11-16 22-18 7.5-9 24-20
8.16-19 23x16 9.14x23 27x18 10.12x19 18-15 11.19-24 20x27 12.10x19 25-22 13.9-14 29-25
14.8-11 22-17 15.7-10 26-23 16.19x26 30x23 17.11-15 17-13 18.2-7 27-24 19.3-8 23-19 20.7-11
31-27 21.8-12 27-23 22.15-18 24-20 23.18x27 32x23 24.11-15 25-22 25.15x24 20x27 26.10-15
22-17 27.15-19 23x16 28.12x19 17x10 29.6x15 2-0

55. Kuperman, Iser - Small, Lester

Small, Lester [55]

1.9-13 22-18 2.10-15 25-22 3.6-9 23-19 4.2-6 19x10 5.7x23 26x19 6.11-16 31-26 7.16x23 26x19
8.9-14 24-20 9.8-11 27-23 10.6-10 30-26 11.3-7 19-16 12.12x19 23x16 13.14-17 21x14 14.10x17
16-12 15.17-21 28-24 16.5-9 24-19 17.9-14 26-23 18.1-5 32-27 19.5-9 27-24 20.7-10 12-8 21.21-25
8x6 22.25x27 24x31 23.9x2 1-1

56. Small, Lester - Kuperman, Iser

Small, Lester [56]

1.11-15 22-17 2.15-19 24x15 3.10x19 23x16 4.12x19 17-14 5.9x18 27-24 6.19-23 26x19 7.5-9
24-20 8.6-10 19-16 9.10-14 28-24 10.8-11 30-26 11.1-5 25-22 12.18x25 21x30 13.4-8 16-12
14.11-15 24-19 15.15x24 20x27 16.14-18 27-24 17.9-14 24-20 18.5-9 29-25 19.9-13 32-27 20.8-11
26-22 21.11-15 31-26 22.7-11 27-24 23.11-16 Draw was accepted here 20x11 24.15x8 22x15 25.3-7
12x17 26.13x29 15-10 27.29-8 24-19 28.8-3 10-6 29.2x9 19-16 30.3-8 26-23 31.8-29
[31.9-14 16-12 32.8-11 (32.8-4 30-26 33.4-11 23-19 No place to put the king 34.11-4 19-15
35.4x31 12-8=) 32...30-26 33.11-4 23-19 34.14-18 19-15 35.18x11 12-8=]
31...16-12 32.29-4 30-26 33.9-14 23-19 34.14-18 19-15 35.18x11 12-8= 1-1

57. Kuperman, Iser - Smith, Carl

Smith, Carl [57]

1.11-16 22-18 2.10-14 25-22 3.7-10 24-19 4.9-13 18x9 5.5x14 22-18 6.6-9 29-25 7.16-20 25-22
8.3-7 28-24 9.2-6 19-15 10.10x28 22-17 11.13x15 23-18 12.14x23 26x3 13.8-11 30-26 14.4-8 21-17
15.11-15 17-13 16.8-11 26-22 17.9-14 3x17 18.6-10 17x16 19.20x11 13-9 20.12-16 9-5 21.16-19
31-26 22.11-16 22-17 1-1

58. Smith, Carl - Kuperman, Iser

Smith, Carl [58]

1.9-14 22-17 2.11-16 25-22 3.8-11 22-18 4.4-8 18x9 5.6x22 26x17 6.2-6 29-25 7.16-19 24x15
8.10x26 30x23 9.11-15 28-24 10.7-10 23-19 11.5-9 27-23 12.9-14 24-20 13.15x24 20x27 14.8-11
25-22 15.11-15 23-18 16.14x23 27x11 17.10-14 17x10 18.6x8 21-17 19.3-7 17-14 20.8-11 32-27
21.12-16 27-24 22.7-10 14x7 23.11x2 31-26 24.1-6 26-23 25.16-20 24-19 26.6-10 23-18 27.2-6
22-17 28.20-24 19x28 29.6-9 1-1

59. Kuperman, Iser - Williams, Elton

Williams, Elton [59]

1.11-15 22-17 2.8-11 23-19 3.11-16 24-20 4.16x23 27x11 5.7x16 20x11 6.3-8 28-24 7.8x15 24-20
8.4-8 17-13 9.10-14 31-27 10.8-11 27-24 11.12-16 25-22 12.14-17 21x14 13.9x25 29x22 14.16-19
32-28 15.2-7 1-1

60. Kuperman, Iser - Wright, Neil
Wright, Neil [60]

1.11-16 22-18 2.10-14 25-22 3.7-10 24-20 4.16-19 23x16 5.12x19 18-15 6.19-23 26x19 7.14-18
27-23 8.18x11 19-16 9.2-7 16-12 10.9-13 28-24 11.6-9 30-26 12.9-14 22-17 13.13x22 26x17 14.5-9
29-25 15.9-13 25-22 16.11-15 24-19 17.15x24 20x27 18.8-11 32-28 19.11-15 23-19 20.15x24
27x20 21.1-6 31-27 22.14-18 22x15 23.13x22 21-17 24.22x13 15-11 25.7x16 20x11 26.13-17 11-7
2-0

61. Kuperman, Iser - Wright, Neil
Wright, Neil [61]

1.11-16 24-19 2.8-11 22-17 3.11-15 17-14 4.15x24 28x19 5.10x17 21x14 6.9x18 23x14 7.16x23
27x18 8.7-10 14x7 9.3x10 26-23 10.4-8 31-27 11.5-9 27-24 12.8-11 25-22 13.9-13 29-25 14.6-9
32-27 15.2-6 25-21 16.10-15 23-19 17.6-10 27-23 18.9-14 18x9 19.13x6 24-20 20.15x24 20x27
21.10-15 21-17 22.6-9 27-24 23.11-16 23-18 24.16-20 18x11 25.20x27 11-7 26.27-31 7-3 27.31-20
17-13 28.20-31 13x6 29.31x2 30-25 30.2-11 25-21 31.12-16 21-17 32.16-20 17-14 33.1-6 3-12
34.20-24 12-26 35.24-28 26-19 1-1

62. Kuperman, Iser - Wright, Neil
Wright, Neil [62]

1.11-15 23-19 2.7-11 22-17 3.11-16 17-13 4.16x23 26x19 5.8-11 25-22 6.9-14 29-25 7.6-9 13x6
8.2x9 24-20 9.15x24 28x19 10.11-15 27-23 11.15x24 20x27 12.4-8 23-19 13.9-13 27-24 14.8-11
24-20 15.5-9 31-27 16.1-5 27-23 17.3-7 30-26 18.11-15 32-28 19.15x24 28x19 20.7-11 20-16
21.11x20 22-18 22.13-17 18-15 23.9-13 15x6 24.14-18 23x14 25.17x1 26-23 26.5-9 19-15 27.12-16
23-19 28.16x23 15-11 29.23-27 11-8 30.9-14 8-4 31.27-31 2-0

63. Wright, Neil - Kuperman, Iser
Wright, Neil [63]

1.11-16 21-17 2.9-14 25-21 3.16-20 22-18 4.8-11 18x9 5.5x14 29-25 6.11-15 25-22 7.7-11 23-18
8.14x23 27x18 9.20x27 31x24 10.3-7 26-23 11.6-9 30-26 12.1-5 23-19 13.9-14 18x9 14.5x14 26-23
15.11-16 24-20 16.15x24 28x19 17.7-11 17-13 18.2-7 22-18 0-2

64. Wright, Neil - Kuperman, Iser
Wright, Neil [64]

1.11-16 21-17 2.9-13 24-20 3.5-9 20x11 4.7x16 23-18 5.16-20 18-15 6.10x19 17-14 7.9x18 22x24
8.8-11 25-22 9.4-8 29-25 10.6-10 24-19 11.11-15 27-23 12.15x24 28x19 13.2-7 23-18 14.10-14
18x9 15.13x6 22-18 16.8-11 18-14 17.11-16 25-22 18.16x23 26x19 19.7-11 22-17 20.11-15 19x10
21.6x15 17-13 22.12-16 30-26 23.16-19 32-28 24.1-6 14-9 25.6-10 9-5 26.19-24 28x19 27.15x24
5-1 28.24-28 1x15 29.28-32 15-28 30.3-7 26-22 31.7-11 31-26 32.32-5 28-32 33.5-1 22-18 34.20-24
13-9 35.24-28 9-5 36.11-16 26-22 37.1-6 22-17 38.16-19 17-13 39.6-1 18-14 40.1-15 1-1

65. Kuperman, Iser - Wright, Walter
Wright, Walter [65]

1.11-15 23-19 2.7-11 22-17 3.11-16 17-13 4.16x23 26x19 5.8-11 25-22 6.9-14 31-26 7.6-9 13x6
8.2x9 29-25 9.4-8 27-23 10.3-7 24-20 11.15x24 28x19 12.11-15 32-28 13.15x24 28x19 14.8-11
22-18 15.9-13 18x9 16.5x14 25-22 17.1-5 30-25 18.5-9 20-16

[18...22-18 19.10-15 19x3 20.12-16 3x17 21.13x29]

19.11x20 22-18 20.20-24

[20.7-11 25-22 (20...19-15 21.10x19 23x7 22.14x30 25-22 23.30-16 7-3 24.16-11 ; 20...19-16
21.12x19 23x7 22.10x3 18-15 23.20-24) 21.12-16 19x12 22.20-24 21-17 23.14x21 23-19
24.24x15 12-8 25.11x4 18x11 26.9-14 26-23 27.14-17 22-18 28.17-22 18x25 29.21x30]

**20...19x28 21.7-11 28-24 22.10-15 26-22 23.12-16 23-19 24.16x23 18x27 25.11-16 24-20 26.16-19
27-24 27.19x28 20-16 28.28-32 16-12 29.32-23 12-8 30.23-12 8-3 31.12-23 3x17 32.23-26 22x31
33.13x29 2-0**

66. Wright, Walter - Kuperman, Iser
Wright, Walter [66]

1.11-15 23-19 2.8-11 26-23 3.9-13 30-26 4.6-9 24-20 5.15x24 28x19 6.1-6 19-16 7.12x19 23x16
8.9-14 22-17 9.13x22 26x17 10.5-9 17-13 11.14-18 16-12 12.9-14 31-26 13.11-15 27-24 14.4-8
32-28 15.18-23 26x19 16.8-11 19-16 17.6-9 13x6 18.2x9 24-19 19.15x24 28x19 20.9-13 19-15
21.11x18 16-11 22.7x16 20x11 23.18-23 11-7 24.23-27 7-2 25.27-32 2-11 26.32-27 11-22 27.27-20
22-17 28.13x22 25x9 1-1

67. Wright, Walter - Kuperman, Iser
Wright, Walter [67]

1.11-15 21-17 2.9-13 25-21 3.6-9 24-20 4.15-19 23x16 5.12x19 27-24 6.10-15 22-18 7.13x22 18x25
8.9-14 26-23 9.19x26 30x23 10.5-9 24-19 11.15x24 20x27 12.8-11 28-24 13.4-8 25-22 14.7-10
29-25 15.8-12 22-18 16.9-13 18x9 17.13x6 23-18 18.6-9 24-19 19.10-14 27-23 20.1-5 25-22
21.9-13 18x9 22.5x14 32-27 23.3-7 22-18 24.7-10 18x9 25.13x6 23-18 26.11-16 27-23 27.6-9 31-26
28.10-14 26-22 29.9-13 18x9 30.13x6 21-17 31.2-7 22-18 32.7-11 19-15 33.16-20 15x8 34.12x3
23-19 35.3-8 18-14 36.8-11 17-13 37.11-16 19x12 38.20-24 12-8 39.24-28 14-9 40.6-10 8-4
41.28-32 9-5 42.32-28 5-1 0-2

68. Wright, Walter - Kuperman, Iser
Wright, Walter [68]

1.11-15 21-17 2.9-13 24-20 3.6-9 25-21 4.15-19 23x16 5.12x19 27-24 6.10-15 22-18 7.13x22 18x25
8.9-14 26-23 9.19x26 30x23 10.5-9 25-22 11.8-11 29-25 12.7-10 24-19 13.15x24 28x19 14.9-13
22-18 15.1-5 18x9 16.5x14 25-22 17.11-15 32-28 18.15x24 28x19 19.3-7 31-26 20.14-17 21x14
21.10x17 23-18 22.17-21 18-14 23.13-17 22x13 24.21-25 14-9 25.25-29 9-5 1-1

69. Wright, Walter - Kuperman, Iser
Wright, Walter [69]

34.9-14 10x17 35.27-32 2-0

71. Kuperman, Iser - Tsitsinovetsky, M.

z_russian [71]

1.11-15 23-19 2.8-11 27-23 3.4-8 23-18

[3...24-20?! 4.15x24 20x27 5.12-16 23-18 6.16-20 26-23 7.9-14 18x9 8.5x14 30-26 9.8-12 28-24 10.6-9 24-19 11.11-16 22-18 12.9-13 18x9 13.13x6 26-22 14.10-15 19x10 15.6x15 23-18 16.7-10 18x11 17.16x7 22-18 18.1-5 25-22 19.12-16 22-17 20.7-11 18-14 21.2-6 14x7 22.3x10 17-14 23.10x17 21x14 24.6-10 14x7 25.11x2 29-25 26.2-7 25-22 27.5-9 22-18 28.16-19 27-23 29.19x26 31x22=]

[Interesting game after 3...22-17 4.9-13 26-22 5.6-9 32-27 6.9-14 22-18 7.15x22 17x26 8.11-15 19-16 9.12x19 23x16]

4.9-13 26-23 5.6-9 30-26 6.9-14 18x9 7.13x6 23-18?

[7...22-17 8.5-9 17-13 (8...25-22 9.9-14 24-20 10.15x24 28x19 11.11-15 23-18! 12.15x24 18x9 13.6x13 20x27 14.10-15 17-14 15.12-16 22-17 16.13x22 26x17=) 9.9-14 32-27 10.1-5 (10.6-9 13x6 11.2x9 25-22 12.1-6! 22-17 13.9-13 24-20 14.15x24 28x19 15.13x22 26x17 16.11-15 27-24 17.7-11 31-27 18.15-18 19-15 19.10x26 17x1 20.26-30 1-15 21.30-23=) 10...24-20! (10...25-22? 11.12-16 19x12 12.14-18 23x14 13.10x17 21x14 14.6-9 13x6 15.2x25 29x22 16.15-19 24x15 17.11x25) 11.15x24 28x19 12.11-15 26-22 13.15x24 13-9 14.6x13 23-19 15.24x15 22-17 16.13x22 25x4 17.10-15 4x9 18.5x14=]

8.6-9! 32-27!

[8...26-23?! 9.9-13 21-17 10.10-14! 17x10 11.15x6 24-20! 12.6-10 25-21 13.5-9 31-26 14.9-14 18x9 15.13x6 29-25 16.11-15 23-18 17.15x24 28x19 18.8-11 19-16 19.12x19 18-15 20.11x18 22x24 21.7-11 25-22 22.10-14 24-19 23.6-10 32-27 24.2-7 27-23 25.11-15 19-16 26.1-5 22-17 27.15-18 23-19 28.18-22 26-23 29.22x13 16-11 30.7x16 20x11 31.10-15! 11x9 32.5x14 19-15 33.3-8 23-19 34.8-12 15-11 35.13-17 11-7 36.17-22 7-3 37.14-17 21x14 38.22-25=]

9.9-13

[9.2-6 26-23!

[9...27-23 10.9-13

[10.12-16 19x12 11.10-14 24-19 12.15x24 28x19 13.6-10 31-27 (13...22-17 14.10-15 19x10 15.11-16 12x19 16.9-13 18x9 17.13x24 23-19 18.24x15 31-27 White better) 14.11-16 19-15 (14...18-15 15.9-13 15x6 16.1x10 22-18 17.8-11 18x9 18.5x14 25-22 19.11-15 27-24 20.14-18 23x14 21.16x30) 15.10x19 18-15 16.19x10 12x19 17.9-13 White better]

10...19-16 11.12x19 23x16 12.11x27 18x9 13.5x14 31x24 14.3-7 24-19 15.8-11 28-24 16.1-6 24-20 17.11-15 19-16 18.15-18 22x15 19.10x12 26-22 20.6-9 22-18 21.14x23 21-17 22.13x22 25x27=]

10.9-13 24-20 (10...21-17 11.6-9 25-21 12.9-14 18x9 13.5x14 22-18 14.13x22 18x25 15.1-5 25-22 16.5-9+=) 11.15x24 28x19 12.6-9 18-15 13.11x18 22x6 14.1x10 21-17 15.13x22 25x18 16.10-14 31-26! =]

9...18-14?!

[9...27-23! 10.5-9 21-17 11.1-5 25-21 12.9-14 18x9 13.5x14 24-20 14.15x24 28x19 15.11-15 22-18! = 16.15x22 19-15 17.10x19 23x16 18.12x19 17x10 19.7x14 26x10 20.8-11 29-25 21.11-15 20-16 22.15x6 16x23]

10.10x17 21x14 11.12-16! 19x12 12.15-19 24x15 13.11x9 white is better 27-23 14.8-11 28-24

15.7-10 25-21 16.1-6 23-19 17.9-14 22-17? Final error 18.13x22 26x17 19.5-9! 29-25 20.11-16! 25-22

[20...19-15 21.10x28 17x1 22.16-19 1x24 23.28x19 31-27 24.9-14 25-22 25.2-7 22-17 26.7-10 17-13 27.10-15 21-17 28.14x21 13-9 29.15-18 9-5 30.21-25 5-1 31.19-23 27-24 32.23-26 x]

21.16x23 24-19 22.23x16 12x19 23.14-18! 22x15 24.9-13 2-0

72. Romanov V. - Kuperman, Iser

z_russian [72]

1.11-15 22-17 2.8-11 25-22 3.3-8 17-13

[Also possible 3...23-19 4.11-16 29-25 5.16x23 26x19 6.7-11 31-26! 7.11-16!

[7.9-14? loses 26-23!! 8.6-9 17-13 9.1-6

[9.2-6 22-17 10.11-16 (10.15-18 19-15 11.10x26 17x10 12.6x15 13x6 13.1x10 30x16 14.12x19) 10...25-22 11.8-11 22-18 12.15x22 17x26 13.11-15 26-22 14.16-20 21-17! 15.14x21 23-18 16.9-14! 18x11! 17.14-17 (17.14-18 22x15 18.10-14 27-23! 19.20x18 15x22 20.14-17 30-26 21.5-9) 17...30-26 18.5-9

[18.10-15 11x18 19.6-9 13x6 20.1x10 22x13 21.10-14 18x9 22.5x14 26-22 23.14-17 (23.4-8 22-17 24.14-18 19-15 25.18x11 24-19 26.21x14 19-16 27.12x19 27-24 28.20x27 32x7 x) 23...27-23!!]

18...19-16 19.12x19 24x15 20.10x19 11-8 21.4x11 27-24 22.20x27 32x7 23.9-14 7-3 24.14-18

[24.21-25 22x29 25.17-21 3x17 26.21x14 28-24 x]

[24.6-9 13x6 25.1x10 22x13 26.10-15 3x17 27.21x14 28-24 28.15-18 (28.14-18 13-9) 28...24-20]

[24.6-10 3-8 25.1-6 8-11]

24...22x15 25.6-10 15x6 26.1x10 13x22]

9...22-17 10.11-16 (10.15-18 19-15 11.10x26 30x23) 10...25-22 11.8-11 24-20!! 12.15x31 32-27 13.31x24 28x19 14.14-18 23x7 15.16x23 7x16 16.12x19 22-18 17.23x14 17x1 18.19-23 13x6 19.2x9 1-19! 20.23x16 20x11 x Boris Blinder's analysis]

7...17-14! 8.9x18! 26-23 9.16-20 23x7 10.2x11 19x10 11.6x15 30-26 12.11-16 21-17 13.5-9 17-14 14.9x18 26-23 15.8-11 23x14 16.4-8 14-9 17.15-18 22x15 18.11x18 25-21 19.8-11 21-17 20.1-6 9x2 21.18-23 27x18 22.20x27 32x23 23.16-20 2x16 24.12x26=]

4.15-19 24x15 5.11x25?!

[5.10x19 23x16 6.12x19 is better. Here is a sample: 22-17 7.11-15?! (7.11-16 26-22 8.7-10 31-26 9.8-11 26-23 10.19x26 22x31 11.4-8 29-25 12.8-12 25-22 13.16-20 31-26 14.12-16 27-23 15.11-15 23-18 16.9-14 18x11 17.16x7 22-18 18.14x23 26x19 19.7-11 19-16 20.10-14 16x7 21.2x11 17x10 22.6x15 21-17 23.5-9 13x6 24.1x10 28-24 25.20x27 32x23 26.11-16 30-25 27.16-20 25-22 28.20-24=) 7...26-22 8.8-11 31-26? 9.4-8 27-24?! 10.15-18! 22x15 11.19x10 24-19 12.8-12 26-23? 13.11-16 28-24 14.16-20 23-18 15.20x27 32x23 16.12-16! 19x12 17.10-15 18x11 18.7x16 12x19 19.9-14 17x10 20.6x24 x]

5...29x22 6.8-11 22-17 7.10-15 28-24 8.4-8 24-20 9.15-18

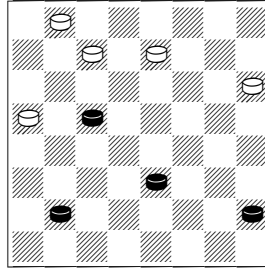
[The only escape was after 9.15-19! 23x16 10.12x19 27-23 11.8-12 23x16 12.12x19 17-14 13.9x18 26-23 14.19x26 31x8 15.7-11 8x15 16.6-9 13x6 17.1x19= Draw a man down]

9...23x14 10.9x18 26-23 11.11-15 23x14 12.6-9 13x6 13.2x18 30-26 14.1-6 26-23 15.6-9 23x14 16.9x18 31-26 17.7-10

[17.18-22 32-28 18.22x13 21-17 19.13x24 28x3 20.8-11 3-14 21.11-15 14-32 22.15-19 32-14]

[17.15-19 27-23 18.18x27 32x16 19.12x19 17-14 20.8-11 21-17 21.11-15 17-13 22.7-11 13-9]

17...26-23 18.18-22 17x26 19.15-19 23x16 20.12x19



21-17! 21.5-9 27-24!! 22.19x28 20-16 23.9-14 16-12 24.14x21 12x3 25.10-14
 [25.10-15 3-8 26.15-19 8-18 27.19-24 26-22 28.24-27 32x23 29.28-32 22-17 30.21x14 18x5
 31.32x18 5x23]
25...3x17 26.21x14 26-22 0-2

73. Smolyak, M. - Kuperman, Iser
z_russian [73]

**1.11-15 21-17 2.9-13 24-20 3.15-19 23x16 4.12x19 27-24 5.19-23 26x19 6.10-15 19x10 7.7x21
 22-18?!**
 [7...24-19 8.8-11 28-24! 9.4-8 19-16]

8.5-9 25-22 9.6-10 29-25 10.10-14!
 [10.8-11?! 18-15 11.10x19 24x8 12.4x11 28-24?!
 [12...32-27! 13.1-6 27-23 14.6-10 31-26!= (14...20-16? 15.11x20 28-24 16.20x18 22x6 17.9-14
 6-1 18.2-6 1x17 19.13x29)]
 13.1-6 22-18! 14.13-17 25-22 15.17x26 31x22 better for white]

10...18-15!
 [10...31-27? 11.14x23 27x18 12.1-5! 18-14 13.9x18 22x15 14.5-9 24-19 15.9-14 32-27 (15...28-24 16.3-7 32-27 17.7-11 20-16 18.11x20 25-22 19.14-18) 16.2-7 27-24 17.7-11]

11.14-17?!
 [11.8-12! 24-19! (11...32-27? 12.1-5 31-26 13.3-8 24-19 14.14-18 15-10 15.12-16 19x3 16.2-7
 22x15 17.7x14 3x17 18.13x29 15-10 19.9-14 10x17 20.21x14) 12.3-8! 32-27! 13.2-6 27-24?! (13...27-23!)
 14.6-10 15x6 15.9x2 20-16 16.14-17 16-11 17.17x26 31x22 18.8x15 19x10 19.12-16
 22-18 20.13-17 18-15 21.16-20 24-19 22.4-8 28-24 23.20x27 25-22 24.17x26 30x32 25.21-25
 19-16 26.8-12 15-11 27.12x19 11-8 28.25-30 32-27 29.30-25 8-3! 30.1-5 10-7 31.2x11 3-21
 32.25-30 21-17 33.30-25 17-21 34.25-30 21-17 35.30-21 17-22 36.11-16 22-31 37.21-14 27-23
 38.14x32 31-20=]

11...31-26 12.2-6
 [12.1-6 24-19 13.2-7 32-27 14.6-10 15x6 15.9x2 27-23 16.8-12 20-16? 17.3-8 28-24 18.7-11 16x7
 19.2x11 23-18 20.11-16 24-20!! 21.16x14 22-18 22.14x23 26x19 23.8-11 19-16 24.12x19 25-22
 25.17x26 30x7=]

12...24-19 13.6-10! 15x6 14.9x2 32-27 15.8-12 27-23 16.2-7?
 [16.3-7! 23-18 17.1-6 19-15 18.7-11 15x8 19.12x3 20-16 20.6-10 16-12! (20...28-24? 21.10-15
 18x11 22.3-8 16-12 23.8x15 24-20 24.15-19 20-16 25.19-23 26x19 26.17x26 30x23 27.21x30 x)
 21.4-8 28-24 22.8-11 24-19! 23.11-16 18-14 24.16x23 14x7 25.2x11 26x19 26.17x26 30x23
 27.21x30 23-18 28.30x16 12x19=]
 [16.4-8? 19-15 17.3-7 15-10 18.7x14 23-18 19.14x23 26x19 20.17x26 30x23 21.21x30 23-18
 22.30x16 20x4 23.13-17!=]

16...20-16!! 17.4-8 28-24 18.8-11 24-20 19.1-6 23-18 20.3-8 18-15 21.11x18 22x15 22.6-9
 [22.8-11 15x8 23.12x3 26-23 24.6-9 16-11 25.7x16 20x11]

22...15-10! 23.7x14 25-22 0-2